

## APPENDIX 1

# STAFF AND CONTRACTORS INDUCTION MANUAL FOR THE ENVIRONMENTAL NOISE BUND REALIGNMENT

Prepared by: SE Department	Revision No: Final	APPENDIX 1
File Name: Final Noise Bund and Loopline Project Plan October 05.doc		Date: 28/10/2005



## INDUCTION HANDBOOK

## ENVIRONMENTAL NOISE BUND REALIGNMENT

**August 2005**

Prepared by: SE Department	Revision No: Final	APPENDIX 1
File Name: Final Noise Bund and Loopline Project Plan October 05.doc		Date: 28/10/2005

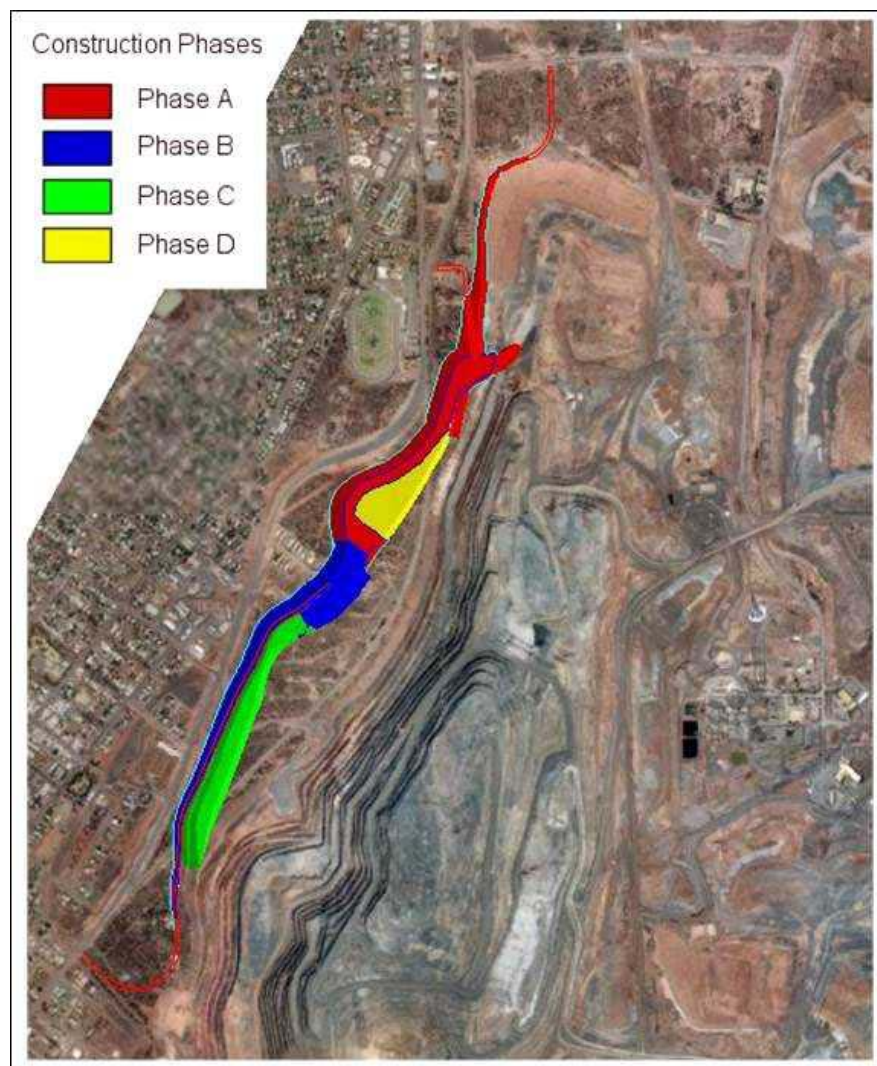
## About this Induction

The purpose of the induction is to inform employees and contractors of their responsibilities to minimise any potential impact of their work during this project on the environment or community.

This handbook addresses KCGM's management practices for the key environmental aspects that have been identified for this project. These aspects are:

- Dust
- Noise
- Incident Response and Review
- Public Consultation

This project is important for our current operations and for a number of environmental reasons. Successful management of this project will assist in gaining community and regulatory support for our operation and for any future projects.



## Dust Management Plan

### Environmental Objective

To protect the amenity and welfare of residential and business areas so they are not unduly affected by dust generated during this project's operations.

### Background

Due to the close proximity of this project to residential and business areas, dust is considered a primary environmental aspect.

The potential dust sources anticipated for the project may be from the initial construction and preparatory earthworks, waste-rock handling and haulage. Activities will include bulldozing, and dumping from trucks.

### Procedures and Practices

#### **Methods of dust control for normal conditions will include:**

- Work will be stopped if wind data indicates dust will travel into residential areas.
- Visual checks for dust generation will be routinely made, with a requirement for operators to immediately notify their supervisors of abnormal or dusty conditions.
- Haul and other surface roads will be watered regularly or if visible dust occurs.
- Saline water will only be used in the active dumping areas; in areas to be rehabilitated potable water will be used.
- A dust-binding agent may be used to control wind blown dust during the construction period.
- Forecasts from the Bureau of Meteorology will be used to help schedule work so as to avoid drier and windier periods when dust may travel into residential areas.
- Actual wind speed and direction data should also be routinely reviewed throughout the day.
- Contact with the KCGM Safety and Environment Department for further information or advice.

#### **Methods of Control for Abnormal Conditions:**

- Visual checks for normal conditions will apply.
- Project work causing dusty conditions in residential areas will be suspended.
- Additional watering of unsealed roads, and working surfaces, may also be used.



Prepared by: SE Department	Revision No: Final	APPENDIX 1
File Name: Final Noise Bund and Loopline Project Plan October 05.doc		Date: 28/10/2005

## Noise Management Plan

### Environmental Objective

To manage operations to minimise the potential for noise to impact on residential areas.

### Background

The project will occur near to a light industrial zoned area that includes some residential properties. Noise is therefore considered by KCGM and stakeholders to be a key environmental aspect.

The activities with the most potential for noise impact on the environment are haul truck movements and using dozers and graders.

### Procedures and Practices

#### **Working Times**

- Noise bund construction activities will be restricted to between 0700 hrs and 1900hrs on days excluding Sundays and gazetted Western Australian public holidays.

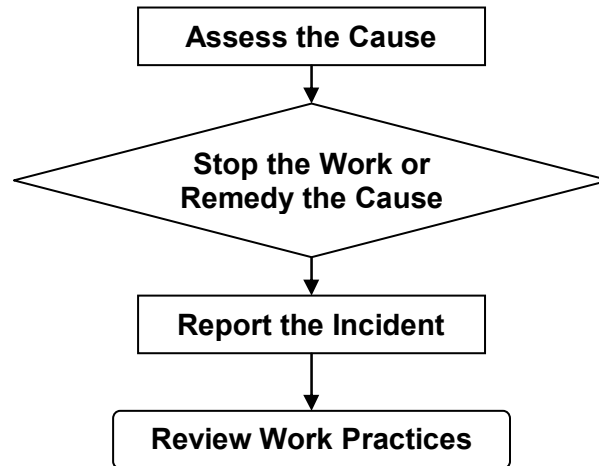
#### **Haulage**

- Larger trucks will be utilised where feasible in order to reduce number of truck cycles.
- All vehicles are to be fitted with smart alarms.



## Incident Response and Review

In the event of an incident resulting from the activities of this project KCGM will:



Environmental incidents are to be immediately reported through project supervisor(s), to the Production Superintendent, and the Safety and Environment Department of KCGM.

**All incidents related to safety or environmental issues must be recorded in the Accident Incident Reporting System (AIRS).**

Concerns or complaints from the public will be responded to and remedied as set out in the procedure for the KCGM Public Inquiry Line. All public feedback must be recorded in the Public Inquiry Line (PIL).

## Community Consultation

All employees and contractors associated with this project must be aware of their responsibility to forward any public inquires or complaints on to the Public Inquiry Line (9022 1100). All public feedback must be recorded in the Public Inquiry Line (PIL).

This is to enable KCGM to take appropriate and timely response or follow up action. The flow chart on the following page shows how these inquiries are addressed by KCGM.

### Community Consultation Flow Chart

