

APPENDIX 2

NOTIFICATION DOCUMENTS TO NEIGHBOURS NEAREST TO THE PROJECT

Prepared by: SE Department	Revision No: Final	APPENDIX 2
File Name: KCGM Southern Landform Extension Project Plan Feb 04.doc		Date: 05/02/2004

YOUR PERSONAL INVITATION

Dear Neighbour,

As you may be aware, KCGM is holding a Mine Open Day this Saturday 11th October from 10am to 4pm.

We wish to invite you, as one of our near neighbours to take a look at the plans we have in the pipeline, and also to meet directly with key people in our organisation.

Amongst others available on the day will be:

- Dr Jim Bawden, Manager of Safety & Environment
- Ms Michelle Birch, Senior Environmental Officer
- Ms Danielle van Kampen Public Relations Coordinator
- Mr Chris Reardon, Senior Planning Engineer

Please look out for us in the major display shed which will be hosting information on our Environment and Community efforts.

Please feel free to contact us at any stage to discuss any queries you may have about our operations through our Public Inquiry Line on 9022 1100 (fridge magnet attached for your reference). We look forward to meeting you on our activity filled day.

Yours Sincerely
Kalgoorlie Consolidated Gold Mines Pty Ltd



JOHN SHIPP
GENERAL MANAGER

Public Inquiry Line	Accounts	Employee Relations	Open Pits	Finiston Mill	Gidji Roaster	Supply
T 9022 1100	T 9022 1162	T 9022 1184	T 9022 1800	T 9022 1484	T 9022 1602	T 9022 1358
F 9022 1190	F 9022 1119	F 9022 1189	F 9022 1855	F 9022 1411	F 9022 1610	F 9022 1376

KCGM is the manager of joint ventures between Barrick Gold of Australia Limited and related corporations of Newmont Australia Limited
\\KCGMDESKTOP\Env\Dept\Environmental\Aspects & Impacts\Review & Change\Mine Planning Approval\Noise Bund and WRD S
Extension\Community\Mine Open Day Invitation.doc

Prepared by: SE Department	Revision No: Final	APPENDIX 2
File Name: KCGM Southern Landform Extension Project Plan Feb 04.doc		Date: 05/02/2004



Community Update Southern Landform Development Concept



KCGM is seeking approval to extend the environmental noise bund southward and infill a waste rock dumping area (shown as the green area on the conceptual plan over leaf). We lodged an initial application with the EPA to vary our existing approvals over this area and have been asked to submit more detailed information.

The purpose of this update is to let you know of our plan and invite your feedback. Whilst the plan shows our concept design it is important to get input from interested parties so that we can improve the design and accommodate concerns and better ideas. In the coming weeks we will be:

- contacting interested parties including neighbours, local and state government;
- modifying our plan based on feedback;
- asking our Community Reference Group to review the modified plan; and
- making the plan available to interested parties.

Members of the KCGM Community Reference Group and staff at KCGM are available to consult with any interested party regarding this plan (see below for contact details). We will document concerns raised by interested parties and address these in the detail of our control programmes including those for dust and noise, timing of construction and rehabilitation methods.

The existing environmental noise bund which runs along the western edge of our operation helps in shielding residential areas from mine noise. KCGM plans to extend this bund to ensure that this protection for the community is maintained as the operation develops southwards.

The environmental noise bund will cross over Outram St. This road is currently used by KCGM employees to access "Pad 18", the crib room and shift change facility. To maintain access a new road will be constructed. The effectiveness of the noise bund will be maintained by the north-south orientation of this road. In the longer term the gap will be filled when the road is relocated.

The work areas are degraded from past mining activity and minimal clearing is required. This work will involve using similar equipment to that in the Fimiston Open Pit. Dust levels will be managed with the use of water carts and monitoring of wind conditions. To minimise noise, construction of the noise bund will only occur between 7:00am to 7:00pm Monday to Saturday (no public holidays). A staged construction of the noise bund will enable an early start for rehabilitation.



Contact Details

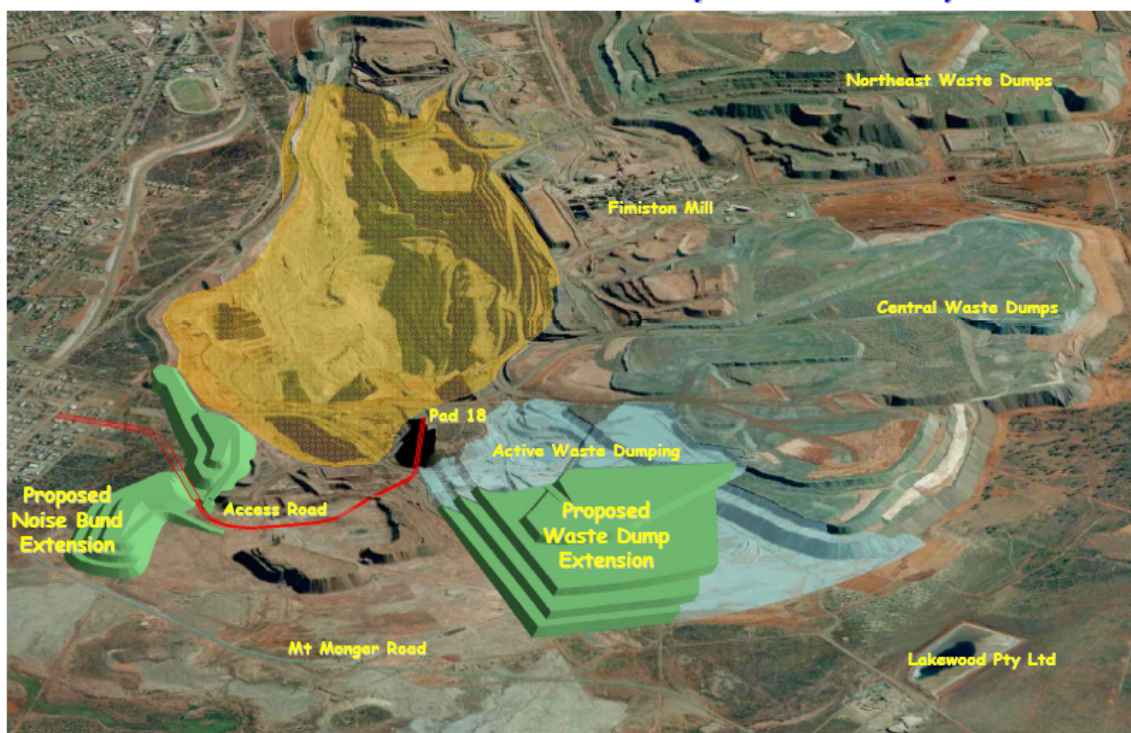
KCGM Community Reference Group

Ron Yuryevich (Chairperson)	(08) 9021 5600
Murray Joyce	(08) 90214262
Amanda Lovitt	0403 284 013
James Murphy	(08) 9021 1655
Anne Petz	0407 990 019
Kevin Smallhorn	(08) 9021 2420
Laura Strachan	(08) 9021 3466
Kathleen Stanick – Bentley	(08) 9022 7501
Deborah Botica	(08) 9021 6467
Kylie Sharpe	0418 930 434

KCGM

Public Inquiry Line	(08) 9022 1100
Jim Bawden	(08) 9022 1340
Michelle Birch	(08) 9022 1338
Danielle van Kampen	(08) 9022 1143

Community Update Southern Landform Development Concept



If you have any queries or feedback regarding this project, please contact the KCGM Inquiry Line 24 hours, 7 days a week on 9022 1100, visit our website at www.superpit.com.au or contact a member of our Community Reference Group.