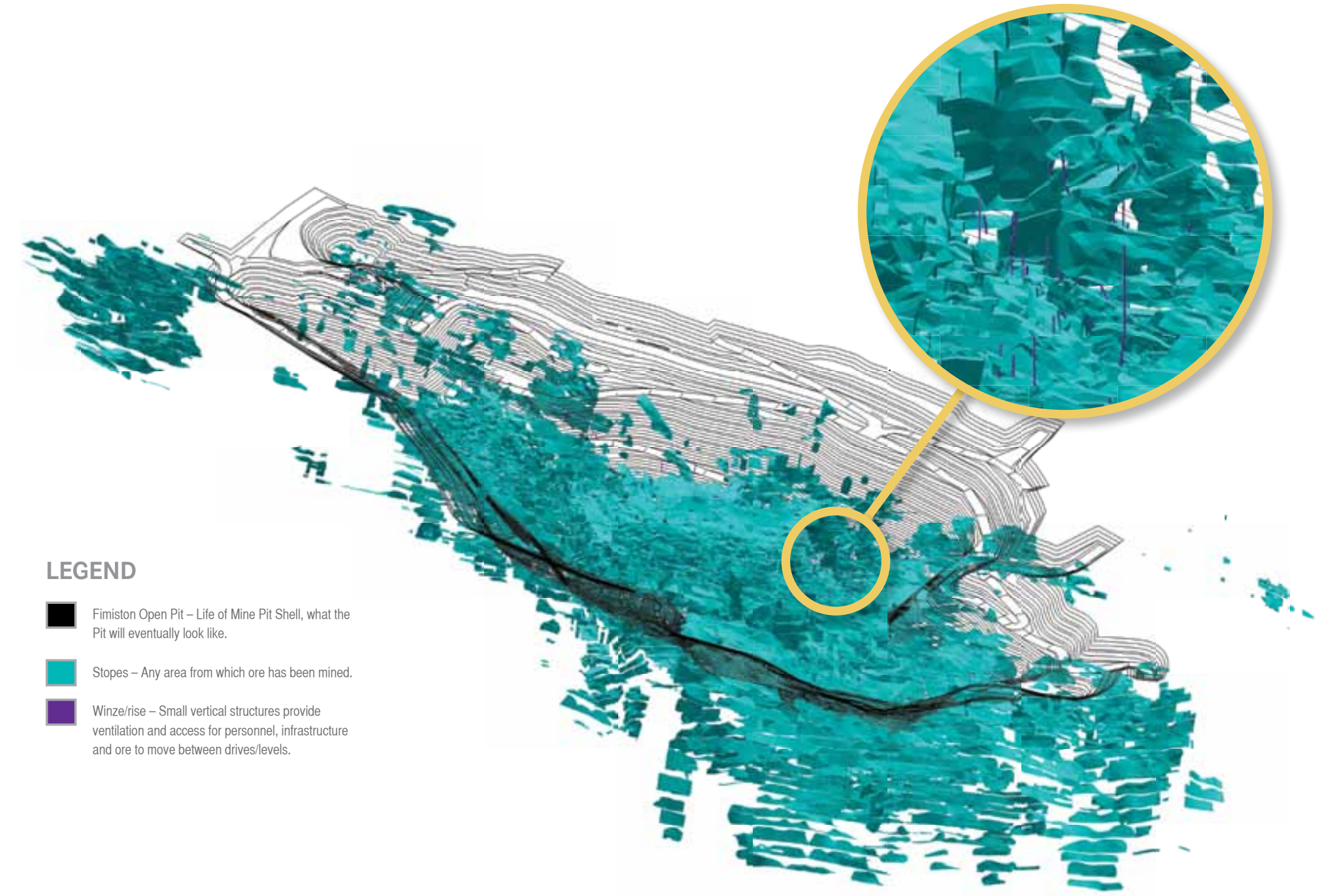


LEGEND

- Fimiston Open Pit – Life of Mine Pit Shell, what the Pit will eventually look like.
- Shafts – Large vertical tunnels, generally topped with a headframe, provide access in and out of the mine for personnel, infrastructure and equipment and removal of ore from underground.
- Drives/levels – Horizontal tunnels provide access around the mine for personnel, infrastructure and equipment and transport of ore and waste.



LEGEND

- Fimiston Open Pit – Life of Mine Pit Shell, what the Pit will eventually look like.
- Stopes – Any area from which ore has been mined.
- Winze/rise – Small vertical structures provide ventilation and access for personnel, infrastructure and ore to move between drives/levels.

VOIDS

Geological flat plans and survey data from historical remnant mining is entered into Vulcan software by the Voids Team, allowing models of the 3,500 kilometres of old workings to be built. These models are analysed to assist with void identification. This enables the Voids Team to ensure that hazards associated with historical remnant mining are managed and mitigated.