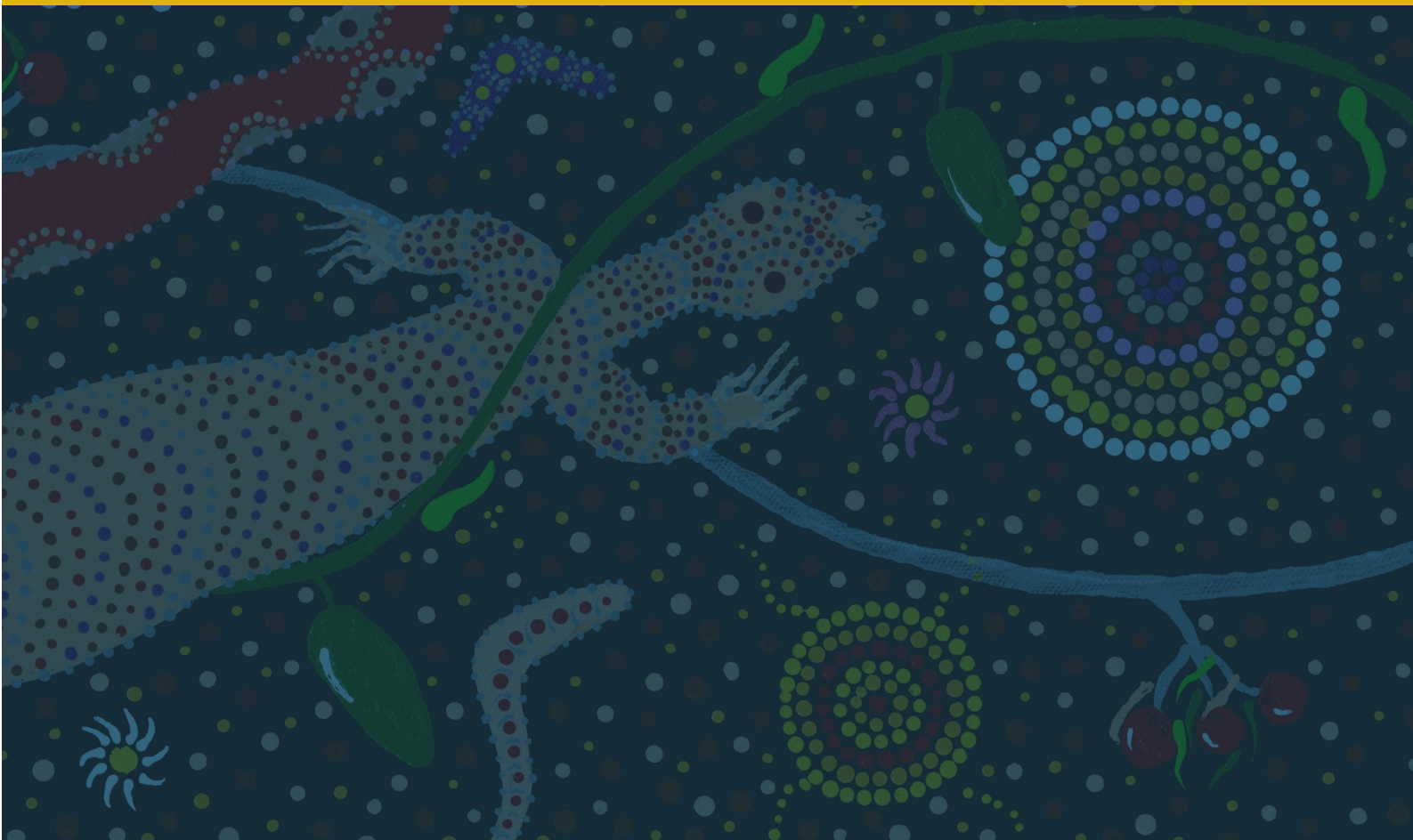




COMMUNITY INVESTMENT PROGRAM

GUIDELINES FOR APPLICANTS



1. ABOUT

KCGM is proud to be a part of the Kalgoorlie-Boulder community.

Our Community Investment Program aims to support local initiatives which build community capacity, connectedness and wellbeing, ultimately delivering sustainable and enduring benefits to the Kalgoorlie-Boulder community.

These Guidelines are designed to assist community groups and organisations seeking funding from KCGM.

If you would like to discuss your project or the application process, please contact KCGM's External Relations Team on (08) 9022 1279, or email partnerships@kalgold.com.au.

2. INVESTMENT AMOUNTS

Funding Available: Up to \$5,000.

Contributions may be in the form of cash or in-kind assistance.

In the Application Form, applicants are requested to outline their overall project budget, and what KCGM's Community Investment contribution will support.

KCGM will award funding based on information provided in the Application Form. Use of local suppliers, co-contributions and projects with wide-reaching community benefits will be viewed favourably.

3. KEY DATES – GRANT ROUNDS

KCGM accepts and assesses applications for the Community Investment Program quarterly, with key dates outlined below.

Please consider this schedule when planning your project.

GRANT ROUND	Q1	Q2	Q3	Q4
Round Opens:	1 January	1 April	1 July	1 September
Round Closes:	28 February	1 May	1 August	1 October
Applicants notified of outcome by:	30 March	1 June	1 September	1 November

4. INVESTMENT CATEGORIES

KCGM supports a range of projects and initiatives that benefit the Kalgoorlie-Boulder community and its residents across the following categories:

CATEGORY	KCGM SUPPORTS PROJECTS WHICH:
Education and Training	<ul style="list-style-type: none"> • Develop skills that improve access to education, training and employment. • Enhance pre-existing education and training programs. • Provide access to STEM (Science Technology Engineering and Maths) related activities for children and young people.
Health and Wellbeing	<ul style="list-style-type: none"> • Improve the long-term health and wellbeing of the community. • Influence positive changes in physical or mental health. • Improve the health and wellbeing of young people, or Aboriginal and Torres Strait Islander people. • Address an identified community health need or risk.
Community Development and Culture	<ul style="list-style-type: none"> • Build community capacity. • Celebrate inclusion, culture and diversity. • Improve social equity and increase community participation. • Provide positive engagement, community development or tourism opportunities for Kalgoorlie-Boulder.
Environment	<ul style="list-style-type: none"> • Protect or rehabilitate wildlife and the natural environment. • Improve community awareness and stewardship of the environment. • Encourage responsible use of natural resources. • Promote recycling, sustainability, improved water and energy efficiency.

KCGM's Community Investment Program is aligned with our Social Impact Assessment (SIA), conducted every five years. To view our SIA, visit our website.

5. ELIGIBILITY

KCGM will accept applications from:

- Incorporated, not-for-profit community groups and organisations.
- Non-incorporated, not-for-profit community groups and organisations that are supported by an auspice organisation.

KCGM will not support:

- Requests which benefit only one person or group, or an individual business enterprise.
- Activities which have the potential to polarise the community, such as political and religious campaigns and events.
- Non-sustainable, disposable entertainment forms (eg. helium balloons or fireworks).
- Funding for promotion and marketing activities.
- Any form of travel or accommodation.
- Stop gap measures to maintain the status quo or survival of an organisation.
- Applications requesting funding for a project which has occurred in the past.

6. OTHER CONSIDERATIONS

Investment decisions will be made with the following considerations in mind:

Applications:

- Applications will not be accepted unless they are submitted on the appropriate paperwork.
- Applications will be considered against a number of factors including budget requirements, and sustainability of activities and their impact.

Funding and capacity:

- Funding is distributed at the sole discretion of KCGM, and investments are not automatically granted because they meet the criteria.
- Preference will be given to organisations which have pursued various funding channels rather than relying solely on KCGM for support.
- Organisations must have the capacity and financial stability to support the project for which the funds have been requested.
- Successful applicants will only be eligible for funding assistance once during each financial year.

Location:

- KCGM will only support projects and initiatives delivered for the benefit of Kalgoorlie-Boulder and its residents.

7. RECIPIENT RESPONSIBILITIES

KCGM views all funding as a partnership, and will support successful recipients to achieve their project goals and objectives.

In turn, recipients must work with KCGM to fulfil their obligations by:

- Returning all paperwork and requested documentation within the required timeframes.
- Using the funding provided for the purpose it is granted.
- Delivering all the promised benefits outlined in the application.
- Acknowledging KCGM's support in project promotions, community engagement and external communications.
- Providing KCGM with regular updates on the status of the project.
- Evaluating the success of the project through completing KCGM's Project Evaluation Form within 60 days of the project concluding. This is available on KCGM's website.

8. APPLICATIONS

Application forms for the Community Investment Program are available on KCGM's website at www.superpit.com.au/community.

All applications must be submitted electronically to partnerships@kalgold.com.au.

9. FURTHER INFORMATION

For more information about KCGM's Community Investment Program, or to discuss your application, please contact KCGM's External Relations Team via:

Phone: (08) 9022 1279

Email: partnerships@kalgold.com.au

Website: www.superpit.com.au/community