

KCGM MEDIA RELEASE



Friday 8 October 2010

Containing Central Corridor Drilling

KCGM will be conducting an exploration drilling program for potential underground resources at depth between Fimiston and Mt Percy near Williamstown in October with activity in the area starting next week [Ed note 11th October, 2010]

The program will initially consist of 19 diamond drill holes, with drill hole depths ranging between 200m and 550m. Drilling will take place in three areas as shown in the map following.

“Identifying additional resources is an important part of our business at KCGM,” said General Manager, Russell Cole. “Our current mine life is to 2021, and it is part of our job to find reasons to extend that deadline by maximising our leases potential.”

The approximate duration the drill rig(s) will spend at each of the sites will vary depending on productivity, however it is estimated that a rig will spend between five and six weeks at each of the areas. Drilling is expected to commence in the second week of October and will continue intermittently for approximately 12 months.

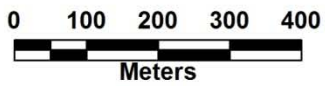
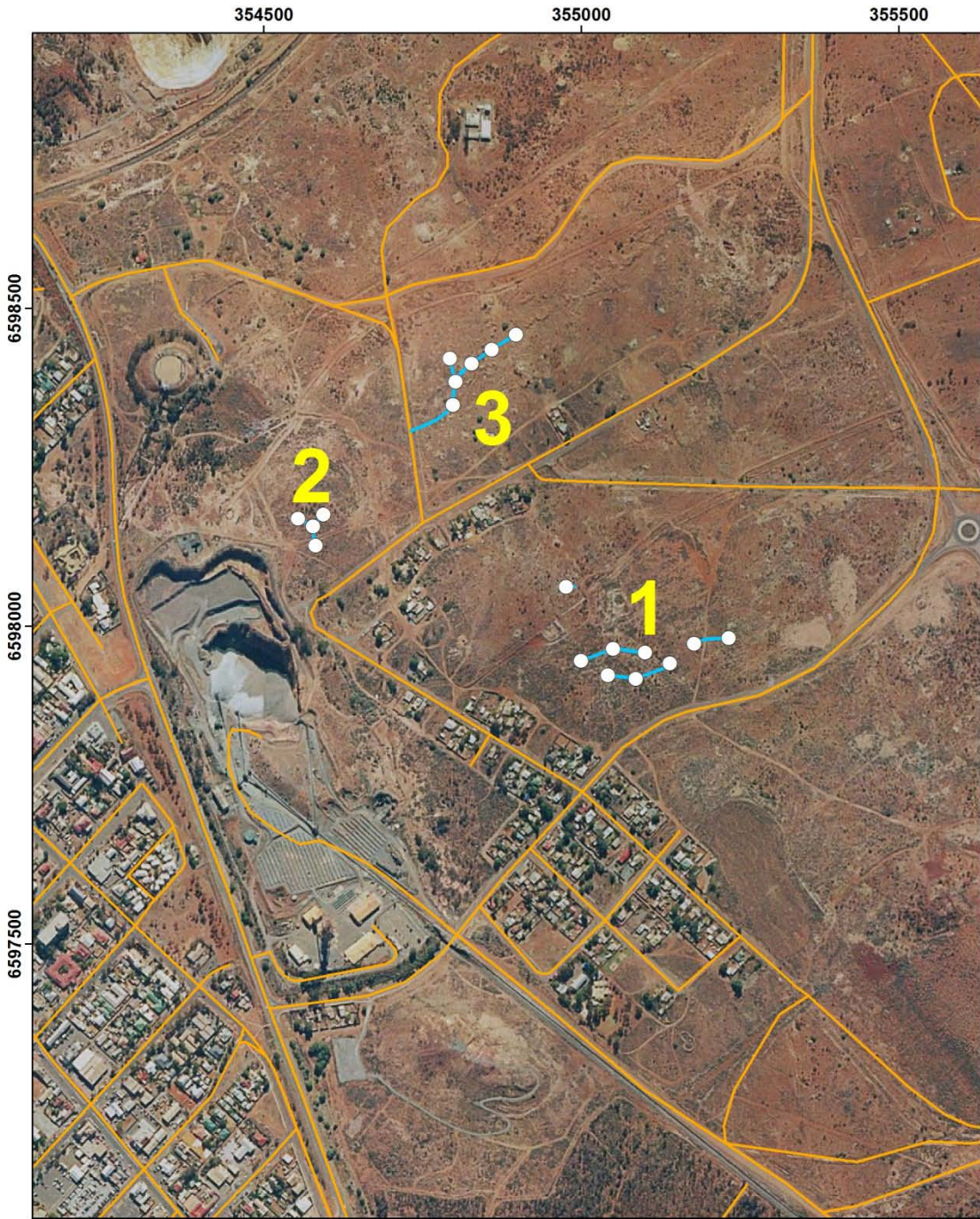
There will be up to two rigs operating at any one time in the Central Corridor. Drilling will take place during day shift only 7am to 7pm, and will comply with all government set regulations and policies outlined in KCGM’s environmental management plan.

To reduce the impact of the drill rig on nearby residences, stacked shipping containers will be used as a visual and sound barrier. Nearby residents should expect to see stacked shipping containers with support vehicles parked outside - the drill mast will rise above the containers.

“Using shipping containers is a unique way to minimise any noise and dust from the drilling program. This coupled with our daytime operational hours and a strict environmental plan should mean that we can possibly be seen - but not heard too much. However if there are any issues we would encourage people to call our Public Interaction Line on 9022 1100,” said Mr Cole.

**ATTACHED ON FOLLOWING PAGE:
MAP AND INFORMATION ON THE CENTRAL CORRIDOR DRILLING**

KCGM Community Relations Manager Danielle van Kampen M 0409 104 613



- Proposed Drillhole Collar
- Required Track Clearing
- Roads

DRILL HOLE LOCATIONS